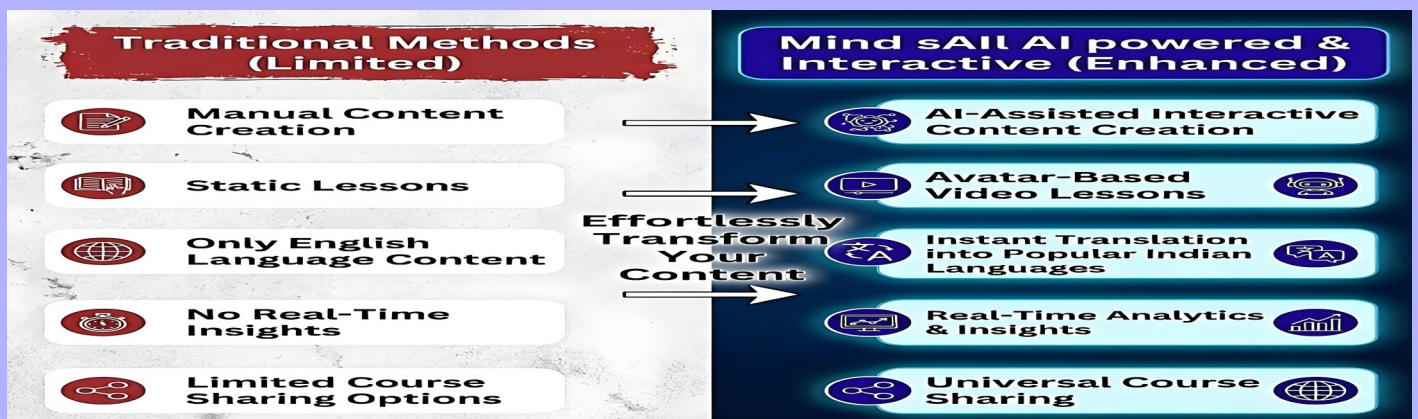




Mind sAll stands as a transformative AI-native eLearning & Educational authoring tool, revolutionizing how faculty and learning professionals create, refine, and deliver engaging online and skill development courses. Its versatile tools enable educational teams to create and deliver engaging course content with ease. The platform's built-in learner analytics allow faculty to track engagement, assess comprehension, and remotely guide students—ensuring personalized support and improved learning outcomes.

### Still Delivering Online Courses Without Interactive Engagement?

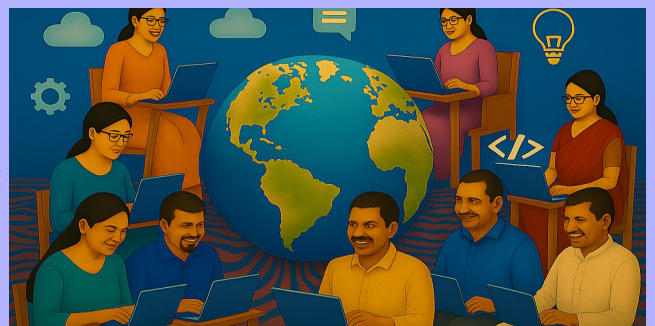


### Scale Without Limits - Concurrent Learning for Unlimited Students.

Run multiple course programs simultaneously across different courses and skill levels

No additional faculty resources or scheduling constraints  
- deploy courses instantly without worrying about capacity.

Teach hundreds of students concurrently without impacting platform performance.



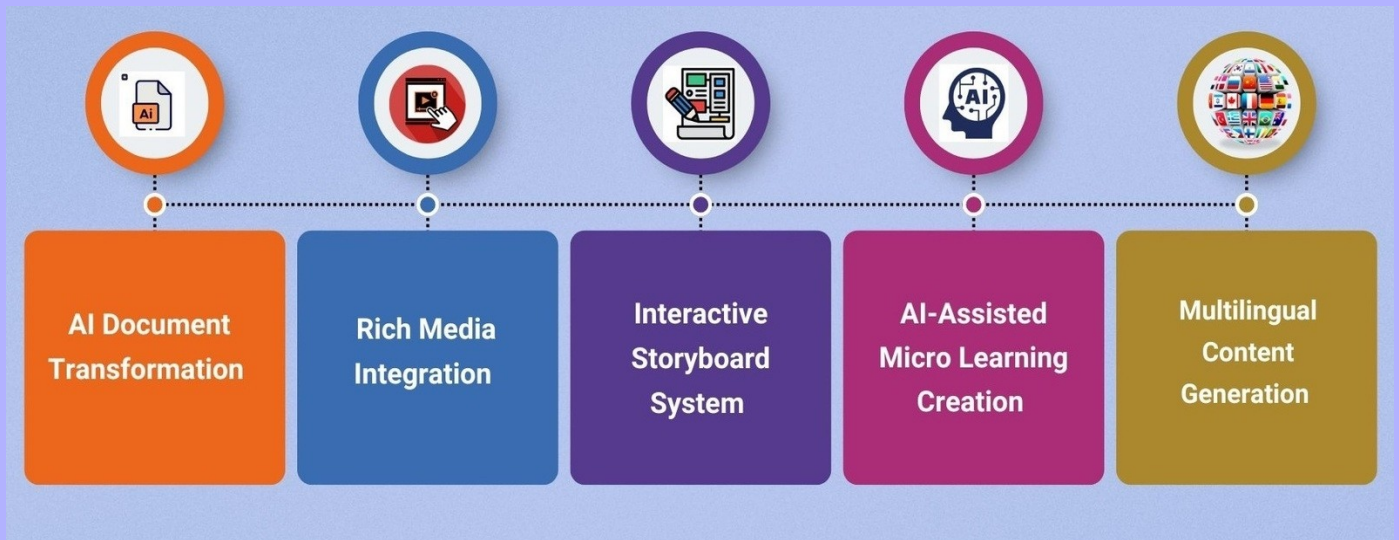


# Going beyond Content — Mind sAI's innovative features at a glance.

## From Documents to Interactive Content in Minutes.

### GENERATE - Future-Ready AI Technology:

Transform any document type into interactive course content through AI processing, enhanced with rich media integration and guided by interactive storyboards. Create optimized micro learning modules and instantly translate into popular Indian languages and international languages with integrated voice-over capabilities.



### AUTHOR - Create with AI-Enhanced Interactive Elements:

Build interactive course content through AI-assisted enhancement with drag-and-drop elements including assessments, videos, and multimedia. Generate avatar-based video lessons and collaborate in real-time with faculty members in a unified workspace.

- Built-in AI Assistant.
- Drag-and-Drop Interactive Elements.
- Video Creation with Avatars.
- Advanced Assessment Tools.
- Real-Time Collaboration.



### SHARE - Deliver Courses Anywhere:

Deploy course content through universal LMS compatibility with SCORM and xAPI, or distribute via direct access links. Ensure optimal viewing across all devices with dynamic content updates and collaborative review capabilities without requiring platform accounts.

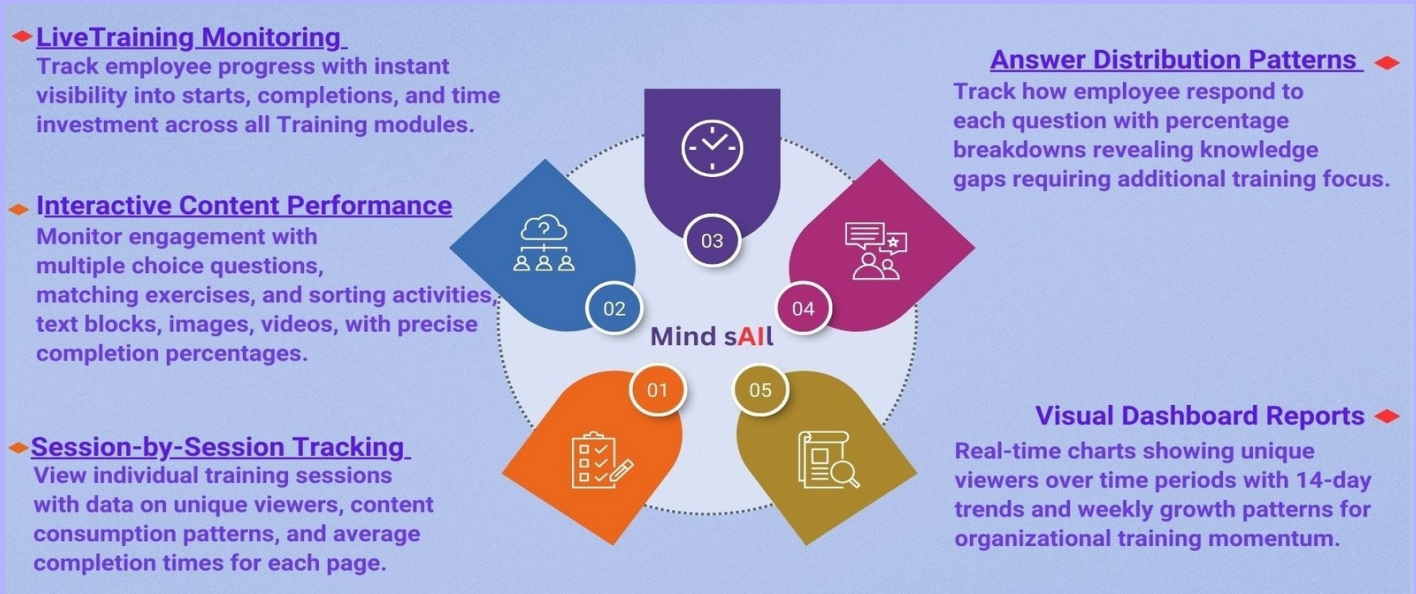
- Universal LMS Compatibility.
- Direct Access Distribution.
- Multi-Device Responsiveness.
- Dynamic SCORM Technology.



# Going beyond analytics—Mind sAll's innovative features at a glance.

## **ANALYSE** View Every Learning Moment as It Happens:

Monitor student progress with live learning tracking, interactive content performance analysis, and session-by-session visibility. Track answer distribution patterns to identify knowledge gaps and generate visual dashboard reports with real-time learner's analytics and exportable PDF reports for faculty decision-making.



## **Analyse**—Real time learner's analytics with exportable PDF report.

Immediate visibility and reports empowering faculty and academic administrators to track individual student performance, measure, optimize, and periodically guide learners who are lagging behind.

## **EXPERT CONTENT CREATION AS A SERVICE BY INTWEL**

Address educational resource limitations through specialized content creation support, collaborating with dedicated specialists to design customized course programs. Track content creation progress with real-time collaborative review, instant feedback, and seamless approval capabilities ensuring faster delivery without compromising quality standards.

- Dedicated Content Creation as a Service
- Real-Time Collaborative Review and Approval



## **Be a Pioneer in Online Learning with Mind sAll: AI-Powered Platform for Student Success and Enhanced Enrollments**

Quickly establish leadership in the emerging online learning marketplace. [Watch the YouTube video](#). See how Mind sAll enhances your institution's online programs with engaging content, meaningful analytics, and scalable delivery.

